

The logo for MASCON is displayed in a bold, blue, sans-serif font. The letters are thick and blocky, with a slight shadow effect. The logo is centered within a white rectangular box that has a subtle gradient and a slight drop shadow, making it stand out against the blue background.

MASCON

CONSTRUCTION SYSTEM

The logo for MASCON is displayed in a bold, blue, sans-serif font. The letters are slightly shadowed, giving them a three-dimensional appearance as if they are floating above or attached to the surface of the white box. The box itself has a subtle gradient, being lighter at the top and darker at the bottom.

MASCON

CONSTRUCTION SYSTEM

Features and Advantages

What are the Requirements of an Effective Housing System?

- Must be cost effective.
- Must be capable of a fast rate of construction.
- Must be adaptable to any structural design or architectural layout.
- Must produce high quality, durable and low maintenance structures.
- Must produce structures that are resistant to meteorological and/or seismic conditions.

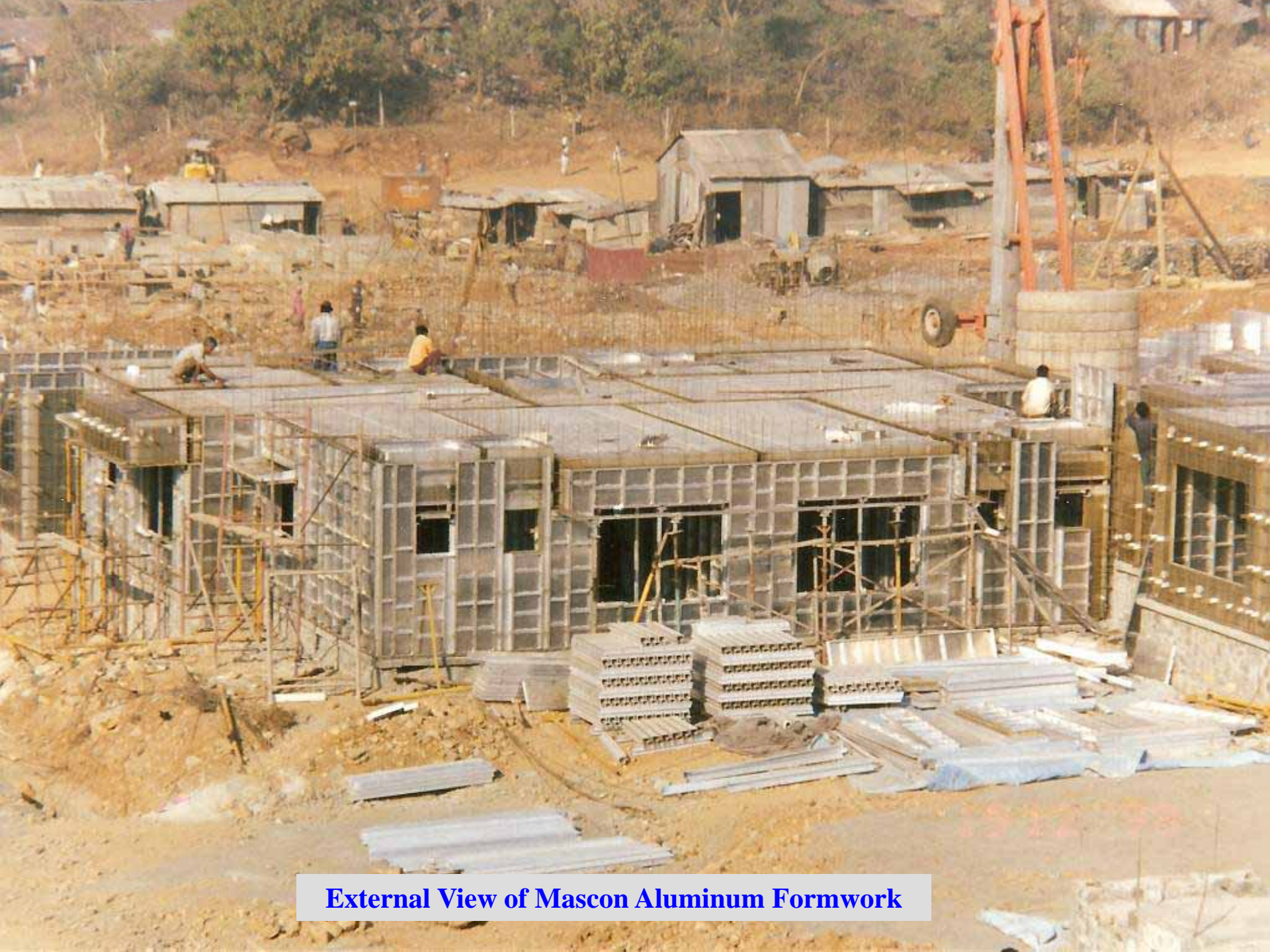
**The Mascon Construction System
meets all of these criteria**

Mascon Construction System

- Hand-held reusable aluminum formwork system for forming cast-in-place concrete housing.
- The System also controls the scheduling of the other trades involved in the construction;
 - steel reinforcement,
 - mechanical and electrical,
 - concreting.



Internal View of Mascon Aluminum Formwork



External View of Mascon Aluminum Formwork

Mascon Construction System

- Used for over 30 years to construct thousands of housing units throughout the world.
- Countries include; Iraq, Malaysia, Indonesia, Thailand, Singapore, Seychelles, Hong Kong, the Philippines, South Korea, Japan, India and the Caribbean.

Mascon's Business

- Business is supplying the Mascon System formwork equipment to local contractors worldwide.
- Included in the supply of the equipment are the services of experienced Mascon field supervisors to train the local contractor.
- The Mascon System formwork is currently produced in India.

Mascon Construction System

- Can be used for any type of housing;
 - single or double storey housing,
 - low rise walk-up apartment buildings,
 - high rise towers.
- Can be used for any income level of housing;
 - low income,
 - medium income,
 - luxury condominiums.



Double Storey Row Housing
Thailand



Three Storey Walk-Up Apartments
Iraq



Five Storey Walk-Up Apartments
Malaysia



High Rise Condominiums
Malaysia



06/12/2006

Four Storey Walk-Up Apartments
Dominican Republic



High Rise Condominiums
India



Low Income Group Housing
India



Economically Weaker Section (EWS) Housing
India



25/10/2008

30 Storey Condominiums
India

Features of the Mascon System

- Versatility
- Speed
- Quality
- Durability
- Cost

Versatility

- Architect is not required to change the building layout to suit the Mascon System.
- Capable of forming any type of structural design for any type of housing.
 - Column & Beam Design
 - Loadbearing Wall Design

Versatility

- The System is unique in that it forms all of the concrete in a building including;
 - walls
 - columns
 - beams
 - floor slabs
 - staircases
 - balconies
 - window hoods
 - storage lofts
- No need for bricks, blocks or heavy plastering.

Speed

- **Multi-Storey Housing** - structures are completed at the rate of four days per floor - regardless of floor size.
- **Single or Double Storey Housing** - structures are completed at the rate of one house per day.
- To increase the speed of construction, several “sets” of Mascon equipment can be provided.



Each Floor is Completed in Four Days



Entire Four Storey Superstructure Completed in 16 Days




Each Double Storey House Completed at the Rate of One House per Day

Quality

- Precision in fabricating the Mascon formwork results in accurate and consistent forming of the concrete.
- The quality of the concrete finish is the same regardless of whether the System is used for low cost housing or luxury housing.



A photograph of a multi-story building under construction. The building's concrete frame is visible, with many window openings. Scaffolding and green safety netting are present on the upper floors. A large orange tower crane is positioned next to the building, extending from the ground to the top. The sky is overcast and grey. In the bottom right corner, there is a yellow date stamp.

25/10/2008











9 10 2006



02/06/2008



02/06/2008



**Unique Method for Propping
of Floor Slab Formwork**



**Undisturbed
Prop Head**



**Soffit of Floor Slab After
Removal of Floor Slab Panels**





21/06/2008

Forming of Staircase



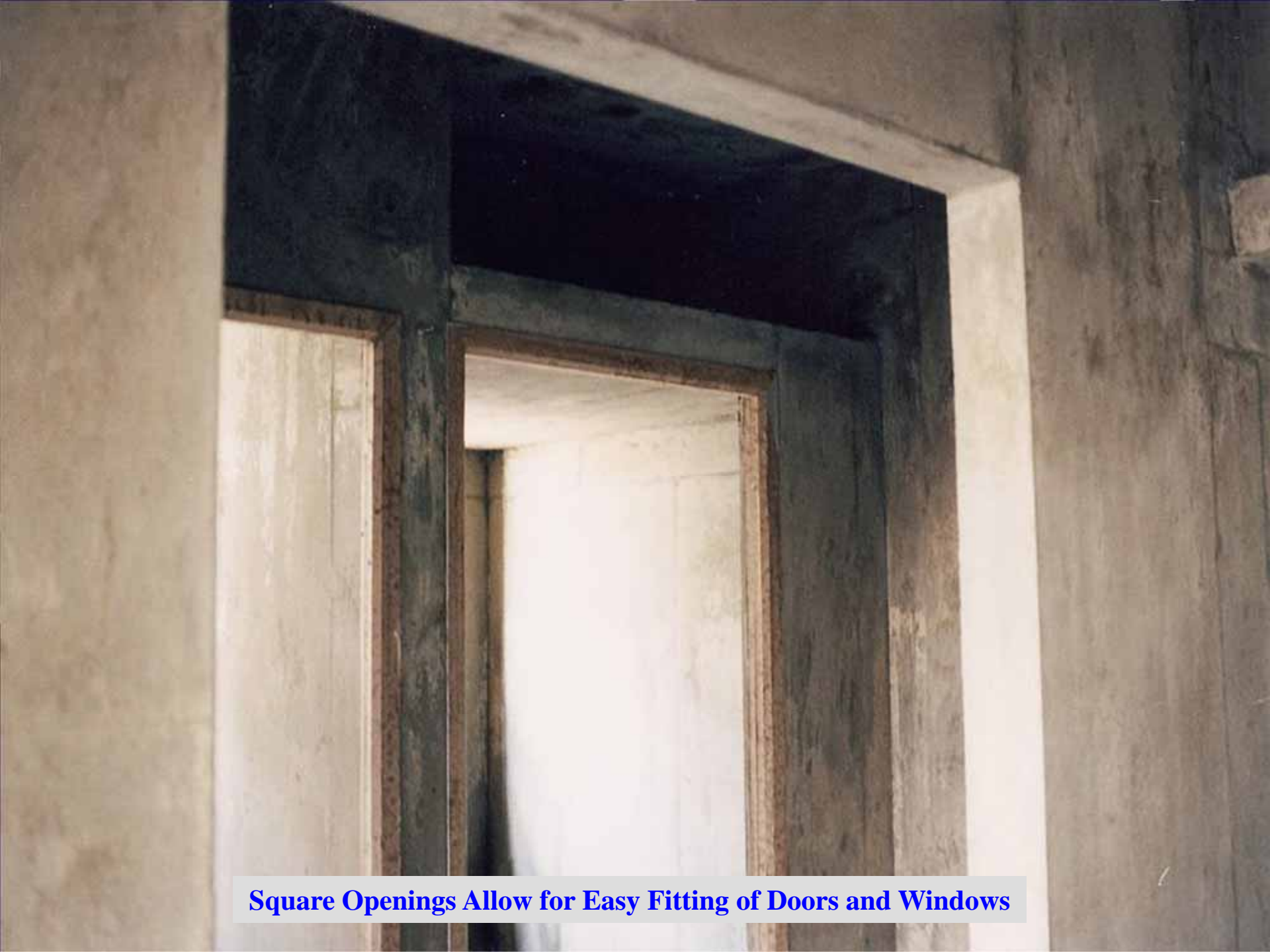
21/06/2008

Any Staircase Configuration

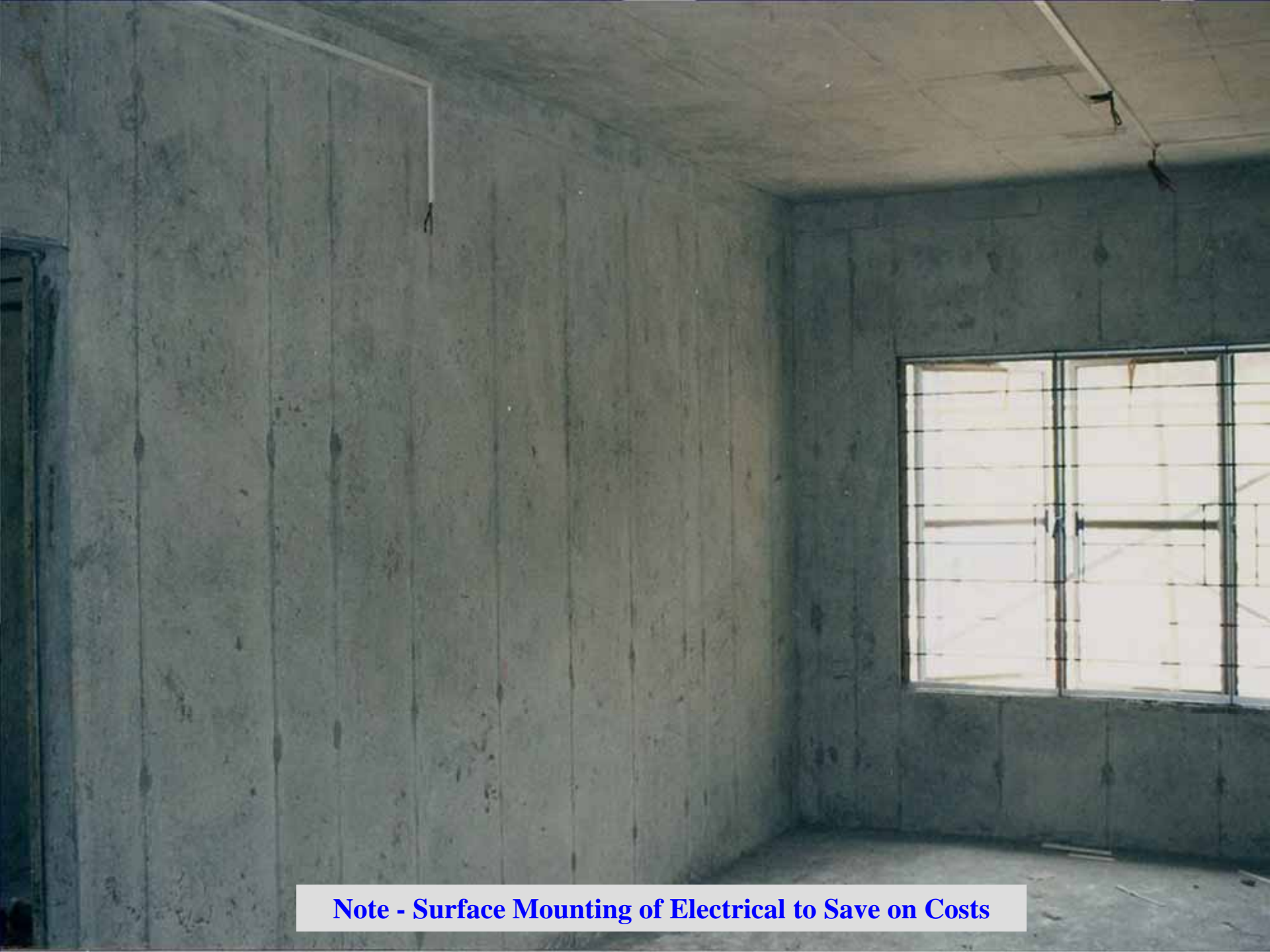




Rigid & Strong Mascon Panels Produce Smooth Off-form Concrete Finish



Square Openings Allow for Easy Fitting of Doors and Windows



Note - Surface Mounting of Electrical to Save on Costs



Electrical, However, is Usually Buried in Concrete with PVC Conduits



PVC Electrical Conduits for Floor Slabs



For Low Cost Housing - No Internal Plastering Required - Only Paint



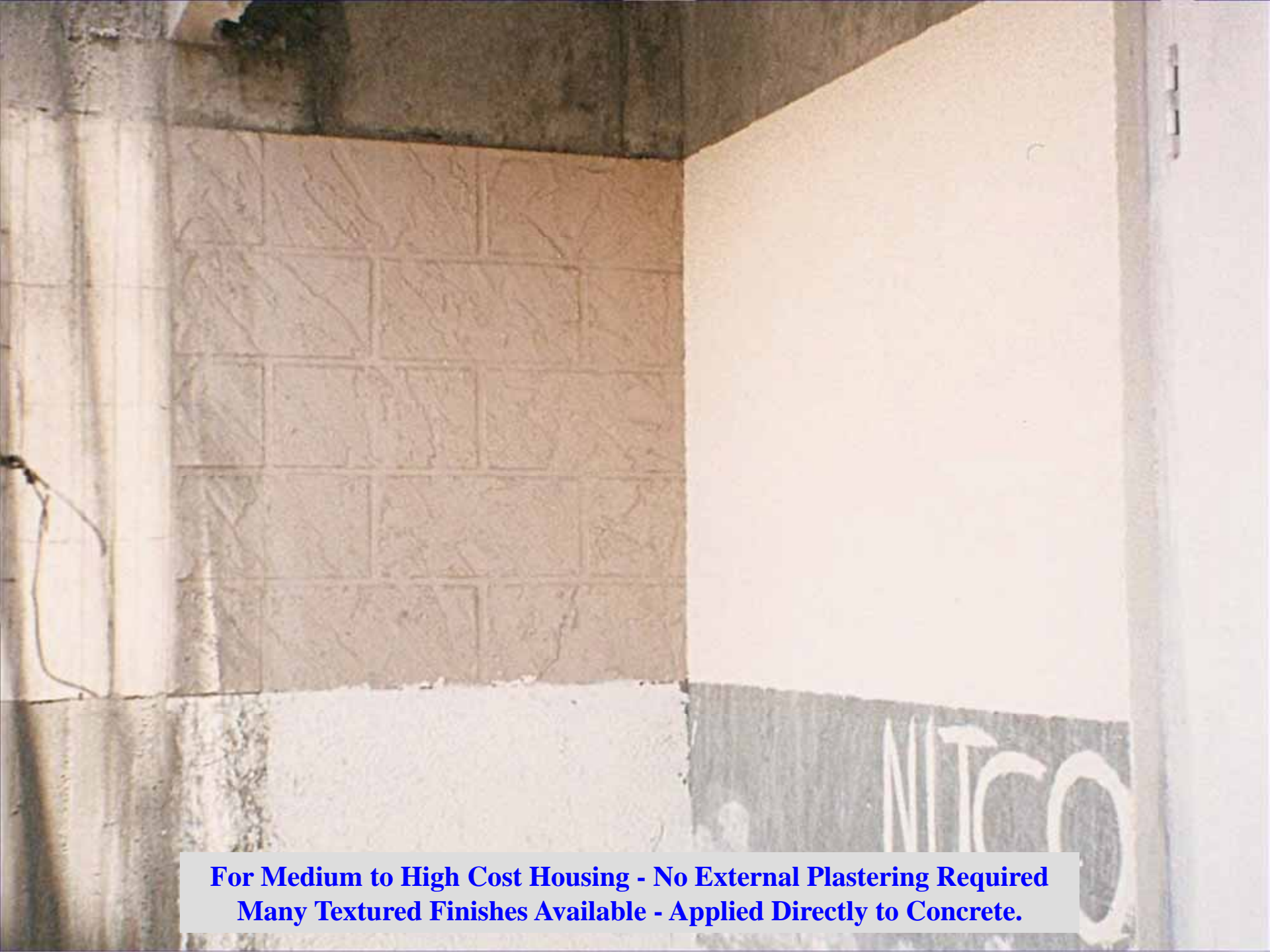
For Medium to High Cost Housing - Thin (3mm) Skim Coat of Plaster is Applied Before Painting



For Low Cost Housing - No External Plastering Required - Only Paint



No External Plastering Required - Only Spray Applied Finish



**For Medium to High Cost Housing - No External Plastering Required
Many Textured Finishes Available - Applied Directly to Concrete.**



**If Required, Rigid Insulation (Polystyrene) Can Be Fastened to External Concrete Surface.
Mesh & Then Textured Finishes Shown Are Applied to the Insulation.**

Durability of Housing Units

- All concrete (walls, slabs, staircases etc.) are poured monolithically, therefore, there are no construction joints and no problems of leaking joints.
- The result is a rigid reinforced “box” structure that is structurally very durable and very resistant to meteorological and seismic conditions.

Durability of Mascon Formwork

- The Mascon formwork is made with an aluminum alloy which has high tensile strength and is also very hard.
- Aluminum does not rust like steel, therefore, the aluminum formwork can be reused hundreds of times.



Commonly Used Steel Panels After About 50 Uses



Mascon Forms After 250 Uses

(Brown Coloring is Form Oil)



*Why is the Mascon System
So Cost Effective?*

Why is the Mascon System So Cost Effective?

- Highly reusable formwork.

Why is the Mascon System So Cost Effective?

- Highly reusable formwork.
- Forms all the concrete in a building.

Why is the Mascon System So Cost Effective?

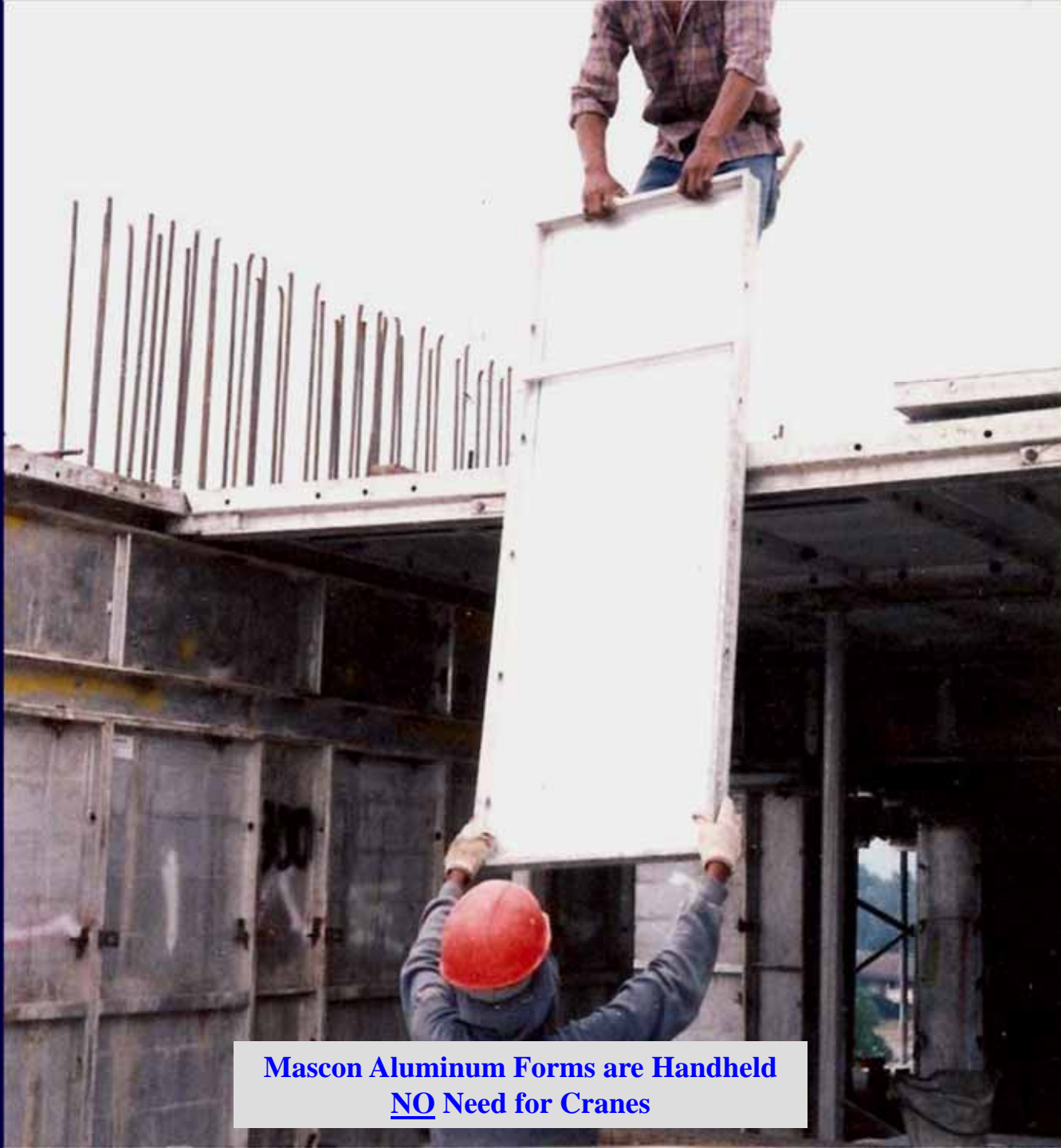
- Highly reusable formwork.
- Forms all the concrete in a building.
- Unique construction cycling.

Why is the Mascon System So Cost Effective?

- Highly reusable formwork.
- Forms all the concrete in a building.
- Unique construction cycling.
- Uses locally available materials - i.e. concrete and reinforcing steel.

Why is the Mascon System So Cost Effective?

- Highly reusable formwork.
- Forms all the concrete in a building.
- Unique construction cycling.
- Uses locally available materials - i.e. concrete and reinforcing steel.
- Requires unskilled labour only and no cranes.



**Mascon Aluminum Forms are Handheld
NO Need for Cranes**



**NO Need for Cranes for Concreting with the Mascon System
as Concrete Pumps Can Be Used - Low Rise to High Rise**

Why is the Mascon System So Cost Effective?

- Highly reusable formwork.
- Forms all the concrete in a building.
- Unique construction cycling.
- Uses locally available materials - i.e. concrete and reinforcing steel.
- Requires unskilled labour only and no cranes.

Why is the Mascon System So Cost Effective?

- Highly reusable formwork.
- Forms all the concrete in a building.
- Unique construction cycling.
- Uses locally available materials - i.e. concrete and reinforcing steel.
- Requires unskilled labour only and no cranes.
- Loadbearing wall structural design.

Why is the Mascon System So Cost Effective?

- Highly reusable formwork.
- Forms all the concrete in a building.
- Unique construction cycling.
- Uses locally available materials - i.e. concrete and reinforcing steel.
- Requires unskilled labour only and no cranes.
- Loadbearing wall structural design.



North Pole

75°

Prime Meridian

Arctic Circle

RUSSIA

EUROPE

MONGOLIA

KAZAKHSTAN

TURKEY

CHINA

ALGERIA

IRAN

ASIA

LIBYA

EGYPT

Tropic of Cancer

NIGER

SAUDI ARABIA

INDIA

CHAD

SUDAN

YEMEN

Arabian Sea

Bay of Bengal

AFRICA

Equator

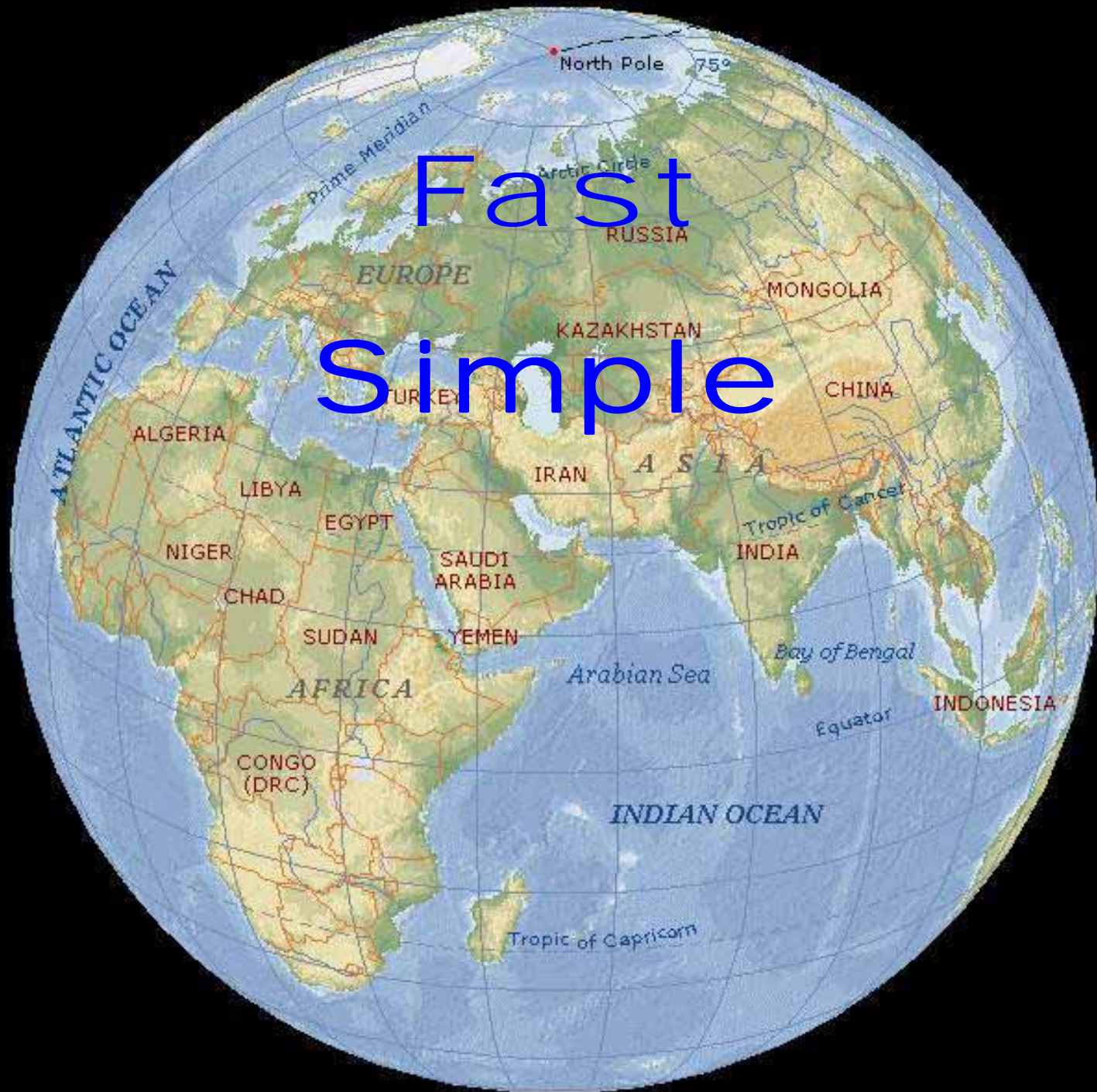
INDONESIA

INDIAN OCEAN

CONGO (DRC)

Tropic of Capricorn









The logo for Mascon, featuring the word "MASCON" in a bold, blue, sans-serif font. The letters are slightly shadowed, giving them a three-dimensional appearance as if they are floating above or attached to a surface.

MASCON

CONSTRUCTION SYSTEM

www.masconsystem.com